

INSTALLATION INSTRUCTION

LED CEILING LIGHT(STARLIGHT)

VT-7128



LINKABLE
UP TO 60 UNITS TOGETHER

2 YEARS WARRANTY

TECHNICAL DATA:

SIZE	POWER (W)	COLOR TEMPERATURE (K)	LUMEN (lm)	BODY COLOR	CRI	CCT	PF	Dimmable	IP	INPUT POWER	LIFEEXPECT (h)	DIMENSION (mm)
4228	8W	3000-4000K	900lm	WHITE	>80	COLOR CHANGE	>0.5	YES	IP20	AC220-240V, 50/60Hz	20,000hours	300*300*49.5mm
4229	8W	3000-4000K	900lm	BLACK	>80	COLOR CHANGE	>0.5	YES	IP20	AC220-240V, 50/60Hz	20,000hours	300*300*49.5mm
4230	8W	3000-4000K	900lm	GOLD	>80	COLOR CHANGE	>0.5	YES	IP20	AC220-240V, 50/60Hz	20,000hours	300*300*49.5mm

INTRODUCTION & WARRANTY

Thank you for selecting and buying V-TAC product. V-TAC will serve you the best. Please read these instructions carefully before starting the installing and keep this manual handy for future reference. If you have any other query, please contact our dealer or local vendor from whom you have purchased the product. They are trained and ready to serve you at the best.

The warranty is valid for 2 years from the date of purchase. The warranty does not apply to damage caused by incorrect installation or abnormal wear and tear. The company gives no warranty against damage to any surface due to incorrect removal and installation of the product. The products are suitable for 10-12 Hours Daily operation. Usage of product for 24Hours a day would void the warranty. This product is warranted for manufacturing defects only.

INSTALLATION INSTRUCTION

LED CEILING LIGHT(STARLIGHT)

VT-7128



LINKABLE
UP TO 60 UNITS TOGETHER

2 YEARS WARRANTY

TECHNICAL DATA:

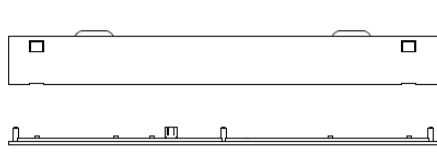
SIZE	POWER (W)	COLOR TEMPERATURE (K)	LUMEN (lm)	BODY COLOR	CRI	CCT	PF	Dimmable	IP	INPUT POWER	LIFEEXPECT (h)	DIMENSION (mm)
4228	8W	3000-4000K	900lm	WHITE	>80	COLOR CHANGE	>0.5	YES	IP20	AC220-240V, 50/60Hz	20,000hours	300*300*49.5mm
4229	8W	3000-4000K	900lm	BLACK	>80	COLOR CHANGE	>0.5	YES	IP20	AC220-240V, 50/60Hz	20,000hours	300*300*49.5mm
4230	8W	3000-4000K	900lm	GOLD	>80	COLOR CHANGE	>0.5	YES	IP20	AC220-240V, 50/60Hz	20,000hours	300*300*49.5mm

INTRODUCTION & WARRANTY

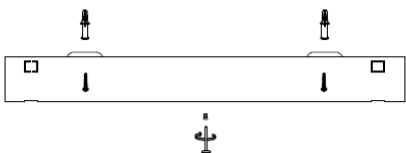
Thank you for selecting and buying V-TAC product. V-TAC will serve you the best. Please read these instructions carefully before starting the installing and keep this manual handy for future reference. If you have any other query, please contact our dealer or local vendor from whom you have purchased the product. They are trained and ready to serve you at the best.

The warranty is valid for 2 years from the date of purchase. The warranty does not apply to damage caused by incorrect installation or abnormal wear and tear. The company gives no warranty against damage to any surface due to incorrect removal and installation of the product. The products are suitable for 10-12 Hours Daily operation. Usage of product for 24Hours a day would void the warranty. This product is warranted for manufacturing defects only.

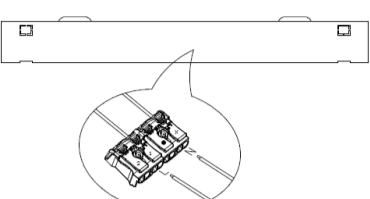
INSTALLATION INSTRUCTION(SINGLE UNIT)



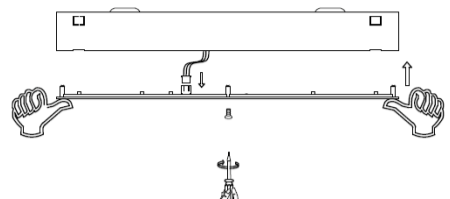
Step1: Take down the LED panel.



Step2: a) Mount the canopy
b) Then unscrew and take down the screw




Step3: Plug in the wire, wire Live match terminal box L, wire Neutral match terminal box N

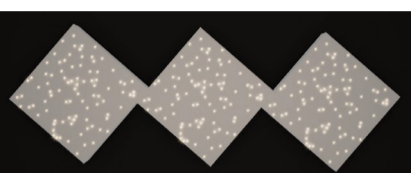


Step4: a) Connect the male plug on the driver and from the driver plug in to the female plug on the LED panel.
b) Fix the LED panel on the canopy & lock the screw

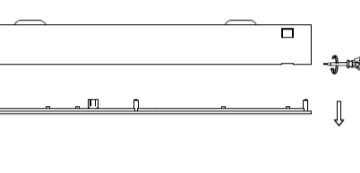
MULTIPLE UNITS INSTRUCTIONS - LINKABLE

Remarks: Maximum can connect up to 480W(60units)

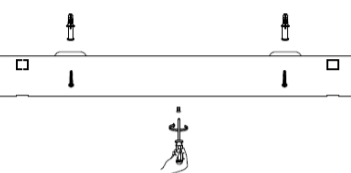
Matching Operation: Press the button  for 2 seconds after powering the light source (lamp) on within 6 seconds. When the lights flash is observed once, matching has been successful. If matching fails, power the light source off for 10 seconds, then repeat the matching operation. The previous matching remote control will be unmatched automatically when a new remote-control matching succeeds.



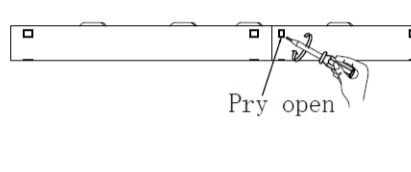
Step1: Select the desired pattern arrangement



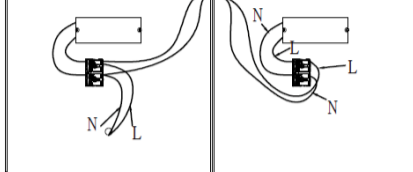
Step2: Take down the LED panel.



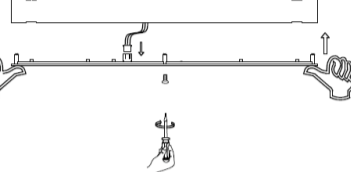
Step3: Mount the canopy & then unscrew and take down the screw



Step4: Pry open the right holes based on your pattern



Step5: Plug in the wire, wire Live match terminal box L, wire Neutral match terminal box N

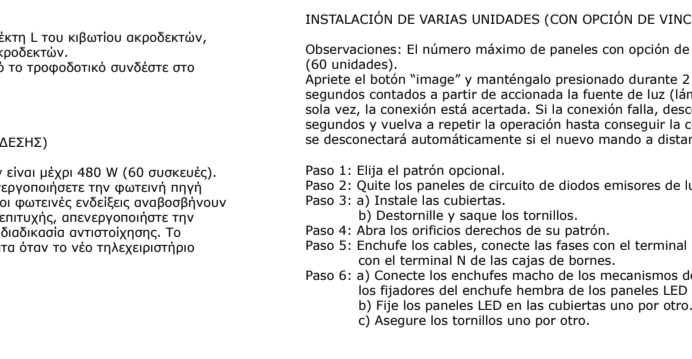


Step6: a) Connect the male plug on the driver and from the driver plug in to the female plug on the LED panel.
b) Fix the LED panel on the canopy one by one
c) Lock the screw one by one

INSTALLATION INSTRUCTION

LED CEILING LIGHT(STARLIGHT)

VT-7128



LINKABLE
UP TO 60 UNITS TOGETHER

2 YEARS WARRANTY

TECHNICAL DATA:

SIZE	POWER (W)	COLOR TEMPERATURE (K)	LUMEN (lm)	BODY COLOR	CRI	CCT	PF	Dimmable	IP	INPUT POWER	LIFEEXPECT (h)	DIMENSION (mm)
4228	8W	3000-4000K	900lm	WHITE	>80	COLOR CHANGE	>0.5	YES	IP20	AC220-240V, 50/60Hz	20,000hours	300*300*49.5mm
4229	8W	3000-4000K	900lm	BLACK	>80	COLOR CHANGE	>0.5	YES	IP20	AC220-240V, 50/60Hz	20,000hours	300*300*49.5mm
4230	8W	3000-4000K	900lm	GOLD	>80	COLOR CHANGE	>0.5	YES	IP20	AC220-240V, 50/60Hz	20,000hours	300*300*49.5mm

INTRODUCTION & WARRANTY

Thank you for selecting and buying V-TAC product. V-TAC will serve you the best. Please read these instructions carefully before starting the installing and keep this manual handy for future reference. If you have any other query, please contact our dealer or local vendor from whom you have purchased the product. They are trained and ready to serve you at the best.

The warranty is valid for 2 years from the date of purchase. The warranty does not apply to damage caused by incorrect installation or abnormal wear and tear. The company gives no warranty against damage to any surface due to incorrect removal and installation of the product. The products are suitable for 10-12 Hours Daily operation. Usage of product for 24Hours a day would void the warranty. This product is warranted for manufacturing defects only.

INSTALLATION INSTRUCTION

LED CEILING LIGHT(STARLIGHT)

VT-7128



LINKABLE
UP TO 60 UNITS TOGETHER

2 YEARS WARRANTY

TECHNICAL DATA:

SIZE	POWER (W)	COLOR TEMPERATURE (K)	LUMEN (lm)	BODY COLOR	CRI	CCT	PF	Dimmable	IP	INPUT POWER	LIFEEXPECT (h)	DIMENSION (mm)
4228	8W	3000-4000K	900lm	WHITE	>80	COLOR CHANGE	>0.5	YES	IP20	AC220-240V, 50/60Hz	20,000hours	300*300*49.5mm
4229	8W	3000-4000K	900lm	BLACK	>80	COLOR CHANGE	>0.5	YES	IP20	AC220-240V, 50/60Hz	20,000hours	300*300*49.5mm
4230	8W	3000-4000K	900lm	GOLD	>80	COLOR CHANGE	>0.5	YES	IP20	AC220-240V, 50/60Hz	20,000hours	300*300*49.5mm

INTRODUCTION & WARRANTY

Thank you for selecting and buying V-TAC product. V-TAC will serve you the best. Please read these instructions carefully before starting the installing and keep this manual handy for future reference. If you have any other query, please contact our dealer or local vendor from whom you have purchased the product. They are trained and ready to serve you at the best.

The warranty is valid for 2 years from the date of purchase. The warranty does not apply to damage caused by incorrect installation or abnormal wear and tear. The company gives no warranty against damage to any surface due to incorrect removal and installation of the product. The products are suitable for 10-12 Hours Daily operation. Usage of product for 24Hours a day would void the warranty. This product is warranted for manufacturing defects only.